

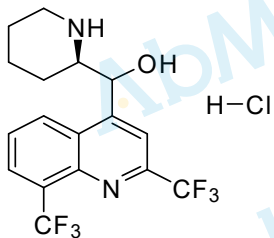
10.210
10.194

8.982
8.961
8.474
8.453
8.414
8.396
8.102
8.006
7.987
7.967

6.817
6.806
6.095
6.089
6.079

3.443
3.418
3.394
3.320
3.272
3.243
2.965
2.938
2.514
2.509
2.504
2.500
2.496
1.709
1.676
1.654
1.619
1.580
1.255
1.235
-0.000

M3690-Mefloquine hydrochloride-01
Chemical Formula: C₁₇H₁₇ClF₆N₂O
Molecular Weight: 414.78



CAS: 51773-92-3

DMSO-d₆, 400 MHz

1.00

1.00

1.04

1.04

1.01

1.02

1.01

1.00

1.03

1.02

1.04

4.11

2.13

10

8

6

4

2

0

PPM